

DECKote

**12
Designer
Colors**

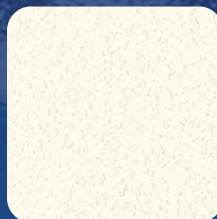
A unique and durable 100% acrylic surface coating that can be used to protect and decorate cementitious patios, swimming pool decks, and walkways. It can be applied to new or existing cementitious surfaces as a stand-alone application or used over the DECKrete or DECKtex systems to form a tough, long lasting colorful finish.

DECKote can be applied by brush, roller or as a spray application. With 12 designer colors to choose from, you are sure to find just the right accent to compliment your landscape.

DECKote Colors*



Polar White



Pearl White



Beach



Shadow White



Linen



Powder Grey



Jute



Harvest



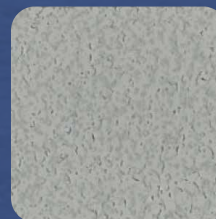
Platinum



Hilltop



Mushroom



Pewter

*Printed color samples are represented as accurately as printing processes permit.
Actual colors may vary.

DECKote

**DECK GUARD 100% ACRYLIC
PATIO & DECK COATING**

**12
Designer
Colors**

DECKote 100% Deck Guard 100% Acrylic Patio & Deck Coating is a specially formulated 100% acrylic floor coating, specifically designed for use on properly prepared pool, patio and cementitious deck surfaces. Its smooth low sheen finish provides excellent weather resistance, hardness and durability, and resists fading, peeling and chipping. It applies easily, provides excellent coverage, is mildew resistant, may be applied to previously painted surfaces, and offers excellent product versatility for a variety of interior and exterior applications. Meets MPI Standard #127 of the Master Painters Institute's approved products list.

Mildew Resistant - This paint contains agents that inhibit the growth of mildew on the surface of this paint film.



MEETS MPI STANDARD #127 OF THE MASTER PAINTERS INSTITUTE'S APPROVED PRODUCTS LIST.

PRODUCT FEATURES

- 100% Acrylic Formula
- Smooth Satin Finish
- Excellent Coverage
- Excellent Durability
- Weather Resistant
- Fade Resistant
- Mildew Resistant
- MPI Approved
- Easy To Apply

PRODUCT USES

Suitable for, but not limited to the following properly prepared surfaces;

INTERIOR/EXTERIOR

- Wood Decks
- Wood Railings
- Doors & Trim
- Balcony Decks
- Walkways
- Stairways
- Concrete Floors
- Pool Decks
- Boat Docks
- Tennis Courts
- Loading Docks
- Catwalks

PERFORMANCE QUALITIES

- Product Quality:** Premium / Best
- Product Use:** Interior & Exterior
- Application:** Brush, Roller & Spray
- Product System:** Water-Based
- Sheen:** Satin
- MPI Standards:** #127
- VOC Compliance:** AIM, LADCO, OTC Phase II, CARB

Great For Interior & Exterior Use!

SURFACE PREPARATION

GENERAL

The entire surface area to be painted should be clean, dry, sound, and free from dirt, grease, oils, waxes, mildew, mill scale, form release agents, curing compounds, and any other surface contaminants that may adversely affect the performance of this coating material.

PAINTED SURFACES

Remove loose, scaling, cracked or peeling paint from previously painted surfaces by hand scraping, sanding, wire brushing or by power tool cleaning methods, such as electric sanders or grinders, etc. Sand rough paint edges smooth to adjacent surface area. Sand glossy surfaces. Spot prime bare surface areas with recommended primer material and allow to thoroughly dry.

NEW SURFACES

GALVANIZED & NON-FERROUS METAL:

It is recommended to allow surface to weather for a minimum of six (6) months then solvent clean per SSPC-SP 1. If weathering is not possible, solvent clean per SSPC-SP 1, and apply recommended primer.

WOOD:

All new wood surfaces must be clean, dry and sound, and should be properly primed and painted before installation or immediately after. Do not allow exterior wood to weather. Weathered wood surfaces should be sanded to expose fresh wood surface before coating. Remove any grade stamps or pencil marks from new wood by lightly sanding. Wood moisture content should be below 15% and wood surfaces that have a mill glaze should be sanded to allow for proper adhesion.

ALUMINUM:

Remove oils, grease, dirt, oxide and any other surface contaminants as per SSPC-SP 1 specifications.

MASONRY & CONCRETE:

Allow a minimum 30 - 45 days to properly dry/cure. The surface should be tested for pH and alkali levels and should not read higher than 8.5 - 10.0 level. Clean surface thoroughly to remove contaminants, oil, grease and embedded chemicals with DECKote #248, Shield's All Oil & Grease Remover. Dense, non-porous concrete surfaces must be properly acid etched with muriatic acid mixed with water, 3 parts water to 1 part acid. Neutralize and rinse the surface thoroughly with clean water.

MILDEW

Surface areas affected by mildew should be treated with a commercial mildew removal and/or cleaner product following the manufacturer's application and safety directions. Rinse thoroughly with clean water, and allow a minimum of 24 hours to dry thoroughly.

WARNING! If you scrape, sand or remove old paint, you may release lead dust. LEAD IS TOXIC. EXPOSURE TO LEAD DUST CAN CAUSE SERIOUS ILLNESS, SUCH AS BRAIN DAMAGE, ESPECIALLY IN CHILDREN. PREGNANT WOMEN SHOULD ALSO AVOID EXPOSURE. Wear a NIOSH approved respirator to control lead exposure. Clean up carefully with a HEPA vacuum and wet mop. Before you start, find out how you can protect yourself and your family by contacting the National Lead Information Hotline at 1-800-424-Lead, or log onto www.epa.gov/lead.

TECHNICAL DATA

- **COLORS:** White, Tint Bases & 10 Stock Colors
4200 White 4201 Tint Base
4202 Deep Base 4203-A Accent Base
- **TINTING:** Universal Colorants
- **VEHICLE TYPE:** 100% Acrylic
- **VISCOSITY:** 80 KU \pm 2
- **GLOSS @ 60°:** Satin | 20 units \pm 2
- **FLASH POINT:** N/A
- **COATING VOC:** Not to Exceed 100 g/l – 0.84 lbs./gal
(Meets AIM, LADCO, OTC II, & CARB Standards)
- **SOLIDS BY VOLUME:** 28.32% \pm 2%
- **SOLIDS BY WEIGHT:** 43.33% \pm 2%
- **ESTIMATED COVERAGE:** 300 – 400 SFPG
(Coverage will vary significantly depending on application method, surface porosity and condition of the surface.)
- **ESTIMATED DRY TIME:** (@ 70° F & 50% Relative Humidity)
To Touch: 1 - 2 hrs. | **Recoat:** 4 - 6 hrs.
Foot Traffic: 6 - 8 hrs. | **Full Cure:** 72 hrs.
(Actual dry time may vary according to relative humidity, temperature, color, applied film build and air movement.)
- **DRIES BY:** Coalescence / Solvent Evaporation
- **CLEAN UP:** Warm Soap & Water
- **THINNING:** Clean Water
- **WEIGHT/GAL:** 10.58 lbs.
- **SHELF LIFE:** 2 - 3 years unopened.
- **PACKAGING:**

Quarts:	N/A	Gallons:	4 per case
2 Gallons:	N/A	5 Gallon:	Each

RECOMMENDED PRIMER COATINGS

Although formulated to be self-priming on sound and properly prepared painted surfaces, the following DECKote's primers are recommended for use on new or bare substrates;

NEW WOOD:

- 26, Holzout II 100% Acrylic Primer/Sealer Stain Killer
- 7-22, PPS Universal Primer/Sealer Enamel Undercoater
- SR-933, Painter's Pride Int./Ext. Alkyd Primer/Sealer

NEW MASONRY:

- 56, Signature Series Waterborne Epoxy Ester Bonding Liquid
- 1414, Rich Flex Alkali Resistant Acrylic Masonry Primer

NEW NON-FERROUS, ALUMINUM & GALVANIZED METAL:

- 1017, Rust Shield Zinc Chromate Metal Primer
- 1215/1220, Rust Shield II 100% Acrylic DTM Gray/White Metal Primers

PREVIOUSLY PAINTED SURFACES:

- Self-Priming

APPLICATION EQUIPMENT

BRUSH APPLICATION: Apply using a quality nylon, polyester, or combination nylon/polyester bristle brush.

ROLLER APPLICATION: Apply using a 3/8" - 1-1/4" nap synthetic or lamb's wool roller cover, depending on the texture and surface porosity.

SPRAY APPLICATION:

- **Pump:** Gas or Electric Airless Sprayer.
- **Pressure:** Minimum 2000 PSI
- **Tip:** 0.015 – 0.019 Reversible
- **Hose:** 1/4" inch (6.3 mm) - 3/8" inch (10 mm)

PRODUCT LIMITATIONS

- **NOT FOR USE** in corrosive or chemical environments.
- **NOT FOR USE** in areas subject to intense heat.
- **NOT FOR USE** on below grade substrates.

CLEAN UP & THINNING INSTRUCTIONS

BRUSH APPLICATION: Apply using a quality nylon, polyester, or combination
CLEAN UP: Clean up any minor spills and spatters immediately with warm soapy water, as well as all painting tools and airless equipment. More serious spills should be contained and removed with inert absorbent material. Dispose of contaminated absorbent, container, and unused contents in accordance with local, state and federal regulations.

THINNING: Stir thoroughly and apply as it comes from the container. Thinning is not necessary. However, if thinning is required, you may add clean water up to 1/2 pint per gallon.

PRODUCT APPLICATION – GENERAL

DECKote 100% Deck Guard 100% Acrylic Patio & Deck Coating may be easily applied with a quality brush, roller, or spray equipment as follows;

- Stir thoroughly in a spiral up and down motion before and during application to keep product completely mixed.
- For best results, it is recommended to apply two finish coats.
- To assure color uniformity always intermix multiple containers of custom tinted and stock colors. Apply a small test sample to verify color.
- During application, always paint to a natural break in the surface, such as a corner or edge.
- **BRUSH APPLICATIONS:** When applying by brush, use a quality nylon or polyester bristle brush, or a quality combination of both, and apply a smooth and generous coat on smaller surface areas, such as cutting-in larger surfaces and painting trim.
- **ROLLER APPLICATION:** When applying by roller cover, use a quality smooth, medium or rough nap roller, depending on surface porosity, and apply an even and generous coat in a "W" or crisscross motion, avoiding any excessive respreading or reworking.
- **SPRAY APPLICATION:** When applying by airless spray equipment, use a unit with a minimum of 2000 psi of pressure, with a 0.015 – 0.019 fluid spray tip.
- Rough or textured surfaces coated using spray equipment should be backrolled to ensure a uniform film, even coverage and proper adhesion.
- Maintain a wet edge during application by brushing, rolling or spraying into previously applied coating area.
- Apply when surface and ambient temperatures are above 55° F and below 90° F. Do not apply when surface and air temperature is within 5° of the dew point.
- Avoid exterior paint application when weather conditions are threatening, and late in the day when there is a threat of moisture condensing on wet paint.

PRECAUTIONARY & SAFETY INFORMATION

CAUTIONS: Avoid prolonged contact with skin, and breathing of dust, vapors and/or spray mists. Causes eye irritation. **USE WITH ADEQUATE VENTILATION!** Ensure fresh air entry during application and drying. If you experience eye water, headache or dizziness, or if air monitoring demonstrates vapor/mist levels are above applicable limits, wear an appropriately fitted respirator, (NIOSH approved), during and after application. Follow respirator manufacturer's directions for respirator use. Avoid contact with eyes, skin and clothing. Use chemical safety glasses, goggles or a face shield for proper eye protection. Wash thoroughly after handling and before eating or smoking. Close container after each use. **DO NOT TAKE INTERNALLY!**

FIRST AID: In case of skin contact, wash thoroughly with plenty of warm soapy water. For eye contact, flush with plenty of water for 15 minutes and get medical attention immediately. If you experience difficulty breathing, leave the area to obtain fresh air. If continued difficulty is experienced, get medical attention immediately. If swallowed, do not induce vomiting, get medical attention immediately.

KEEP OUT OF REACH OF CHILDREN!

LIMITED WARRANTY

Premix Marblite Mfg. Co., Inc. warrants our products to meet the application, appearance and performance properties stated on the label. This Limited Warranty shall not apply to any defect or damage resulting from improper surface preparation, structural defects, failure of a previous paint or improper application of the coating, as described in the directions on the label of this container. If this product is found not to perform as specified, Premix Marblite Mfg. Co., Inc. will, at its option and upon presentation of proof-of-purchase (the original receipt), either furnish an equivalent amount of new product or refund the original purchase price of this product to you. ALL OTHER WARRANTIES ARE EXCLUDED BY PREMIX MARBLITE MFG. CO., INC., EXPRESSED OR IMPLIED, STATUTORY, BY OPERATION OF LAW OR OTHERWISE, INCLUDING MERCHANTABILITY AND FITNESS FOR A PARTICULAR PURPOSE.

LIMITATIONS

Seller's liability for any reason is expressly limited to reimbursement of the purchase price of the materials sold after proof of purchase is provided to the seller. **THIS WARRANTY EXCLUDES (1) LABOR AND COSTS ASSOCIATED WITH LABOR FOR THE APPLICATION OR REMOVAL OF ANY PRODUCT, AND (2) ANY INDIRECT, SPECIAL, INCIDENTAL OR CONSEQUENTIAL DAMAGES ARISING OR RESULTING FOR ANY REASON UNDER THE SALE, HANDLING, OR USE OF GOODS SOLD.** Some states do not allow the exclusion or limitation of incidental or consequential damages, so the above limitation or exclusion may not apply to you. This warranty gives you specific legal rights and you may also have other rights, which vary from state to state. This Limited Warranty may not be transferred or assigned.

DECKote

DECK GUARD 100% ACRYLIC PATIO & DECK COATING

12
Designer
Colors

DESCRIPTION

DECKote is an interior or exterior 100% acrylic coating that is designed to provide a surface coating for pool decks, patios, walkways and driveways. DECKote is available in either sanded or smooth formulas. The sanded version is specifically prepared for pool decks to provide for a slip-resistant surface. DECKote is offered in a wide range of standard and custom colors.

USES

DECKote is a durable surface coating that can be used to protect and decorate cementitious patios, swimming pool decks, walkways and driveways. It is user friendly as it comes complete in 5 gallon pails. It can be roller, spray or brush applied. DECKote is recommended for both new and renovation applications where a new surface color coating is desired.

FEATURES & BENEFITS

- Easy application
- Water clean up
- VOC compliant
- Mildew resistant
- Vapor permeable
- Excellent weather resistance
- Standard & custom colors available

COVERAGE

DECKote is packaged in 5 gallon pails and must be applied at a rate not to exceed 1,000 – 1,500 SqFt per pail. Coverage will vary due to irregular or very porous surfaces.

SURFACE PREPARATION

Patch, level or resurface as required to provide a smooth substrate. Surface must be clean, cool, dry, free of dirt, grease, scaling paint, release agents, curing agents, special surface hardeners, efflorescence or other foreign matter. Some surfaces may require power washing prior to coating. If detergents, cleaners or caustics are used, the surface must be thoroughly rinsed prior to application. Surface cracks greater than 1/16" must be patched with crack filler compound prior to application. Refer to ASTM D-4258 and ASTM D-4261 for complete details on preparing cementitious substrates for coatings.

APPLICATION

DECKote is applied by brush, roller or proper spray equipment in a two-coat application. Allow the first coat to dry to the touch before application of the second coat. Maintain a wet edge to eliminate cold joints and to assure uniformity of color. Keep tools and equipment clean. Protect from rain and freezing temperatures until completely cured. DECKote should be ready to receive light traffic within 8 hours.

PROPERTIES

Drying Time - The drying time is dependent upon ambient temperature, relative humidity and wind conditions. Under average drying conditions (70°F, 55% R.H.), DECKote is dry to the touch in 1/2 hour and dry enough to re-coat in 2 hours.

CLEAN UP

Clean all tools and equipment with water while still wet. Cured material can be removed mechanically or chemically.

STORAGE

Protect from freezing and extreme heat. Store at 40°F or above in tightly sealed containers out of direct sunlight.

LIMITATIONS

Apply only when surface and ambient temperatures are 40°F - 100°F and relative humidity is below 85% throughout the application and drying time.

- **DO NOT** apply when there is a threat of rain or when humidity is 85% or higher.
- **DO NOT** apply to any surface that is frozen or that has not completely thawed, dried and has reached a surface temperature of 40°F.
- **DO NOT** use on below grade or immersed surfaces. Interior surfaces where hydrostatic pressure is present (ground moisture/water pressure) may cause coating to delaminate.
- Allow fresh concrete and masonry substrates to cure for at least 28 days prior to coating. The pH level of these substrates must be below 10 prior to the application of Premix-Marbletite coatings.

DECKote is NOT designed to be used in areas where there is standing water. Caution should be taken to assure that the substrate does not allow for standing water as bond loss could occur.

For safety DECKote SANDED should be used whenever the deck areas are going to be exposed to water as the DECKote SMOOTH could become slippery when wet.

TECHNICAL SERVICES

Available upon request

WARRANTY

The effectiveness of this product depends upon its proper application and the condition and preparation of the surface to which it is applied. Limited Warranty: The product shall be in its unopened package and of the kind specified within. THERE IS NO OTHER WARRANTY OR REPRESENTATION OF ANY KIND, EXPRESS OR IMPLIED (INCLUDING NO WARRANTY OF MERCHANTABILITY OR OF FITNESS FOR A PARTICULAR PURPOSE). No warranty shall be implied by law. This limited warranty continues only until such time as the buyer opens the package and examines its contents. If the buyer, after opening the package and examining its contents, determines that the product is not of the kind specified herein, the buyer should write to PREMIX-MARBLETITE MANUFACTURING COMPANY, 1259 NW 21st Street, Pompano Beach, Florida 33069, explaining the defect and enclosing a sample of the product.

PREMIX-MARBLETITE, upon receipt of the sample from the buyer, will replace the portion of the product that is determined to be defective. This shall be the buyer's sole remedy for breach of warranty and such remedy shall be in lieu of any claim for damages, including consequential damages. Some states do not allow limitations on how long an implied warranty lasts, or exclusions or limitations of incidental or consequential damages, so the above limitations or exclusions may not apply to you. This warranty gives you specific legal rights, and you may also have other rights, which vary from state to state.

The information contained in this bulletin conforms to the standard detail recommendations and specifications for the installation of the products manufactured by PREMIX-MARBLETITE and is presented in good faith. PREMIX-MARBLETITE assumes no liability, expressed or implied, as to the architecture, engineering or workmanship of any project.